



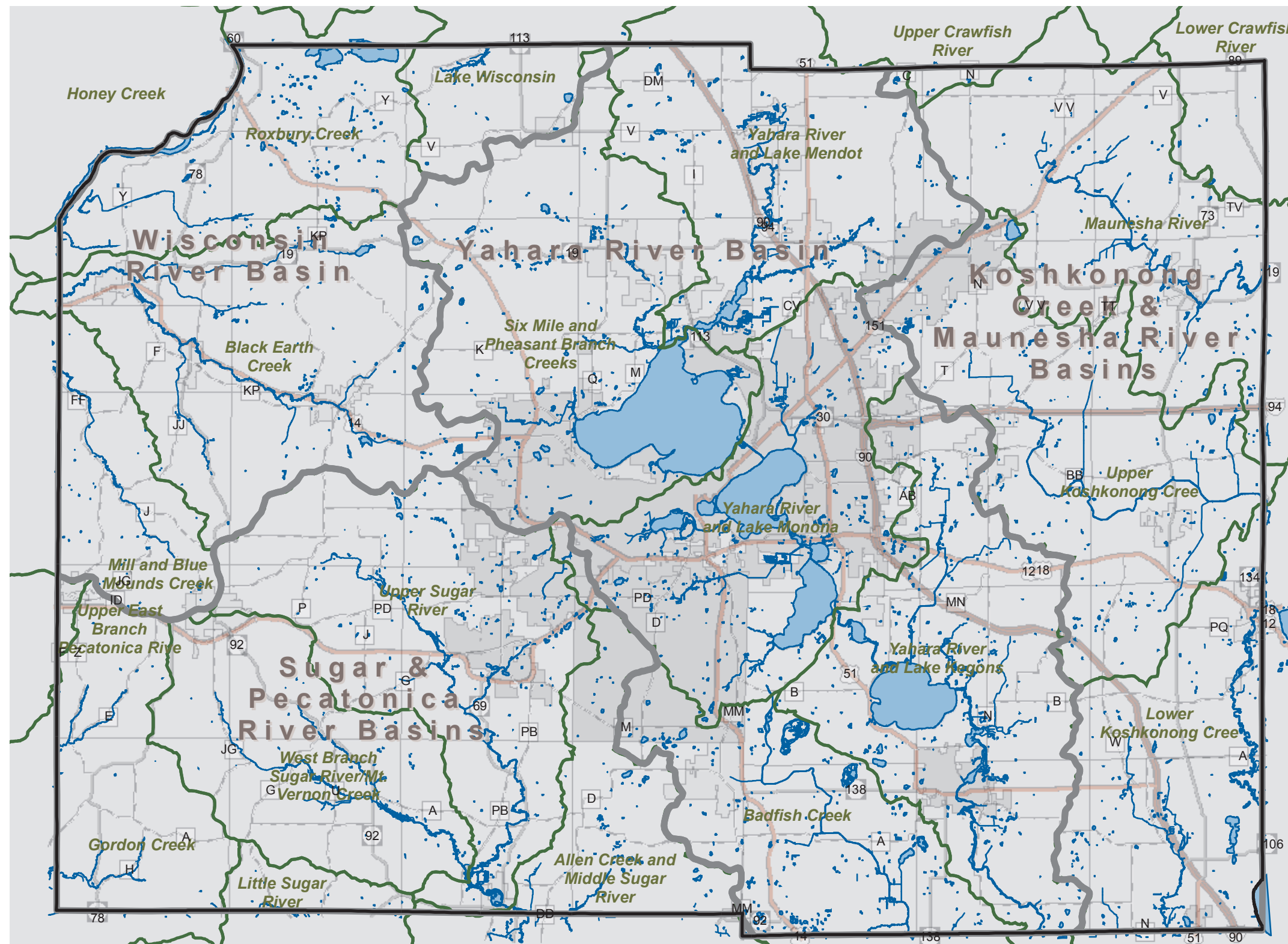
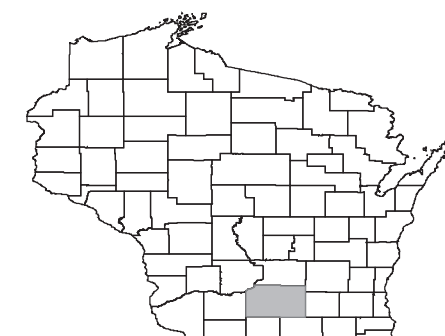
Dane County Comprehensive Plan  
Dept. of Planning & Development  
210 Martin Luther King Jr. Blvd.  
Room 116  
Madison, WI 53703  
[www.daneplan.org](http://www.daneplan.org)

**Watershed Boundaries**

- Watershed Boundary
- Major Basins
- Lakes/Ponds
- Rivers/Streams

**Standard Legend**

- Interstate
- US Highway
- State Highway
- County Highway
- City
- Village
- Town
- Major Lake

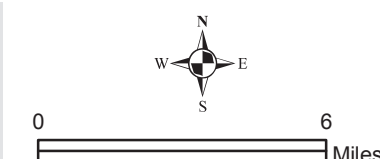


**What you're looking at:**

A watershed is an area of land that drains its water to the lowest point, a common outlet at a stream, lake or wetland.

On its way to the common outlet, water travels over the land surface including farm fields, forest land, urban areas or it seeps into the soil and moves as groundwater. Every land use activity in a watershed can affect its water quality.

For more information: <http://www.countyofdane.com/lwrd/>



June, 2007

Source Info: Watershed Boundaries: 2000 (DCLIO). Road Network: 2006, Parcel Derived (DCLIO). Municipal Boundaries & Water: 2006, Parcel Derived (DCLIO).

This map was prepared through the Department of Planning and Development in conjunction with the Land and Water Resources Department, Land Information Office and the Dane County Regional Planning Commission.

# Watershed Boundary