



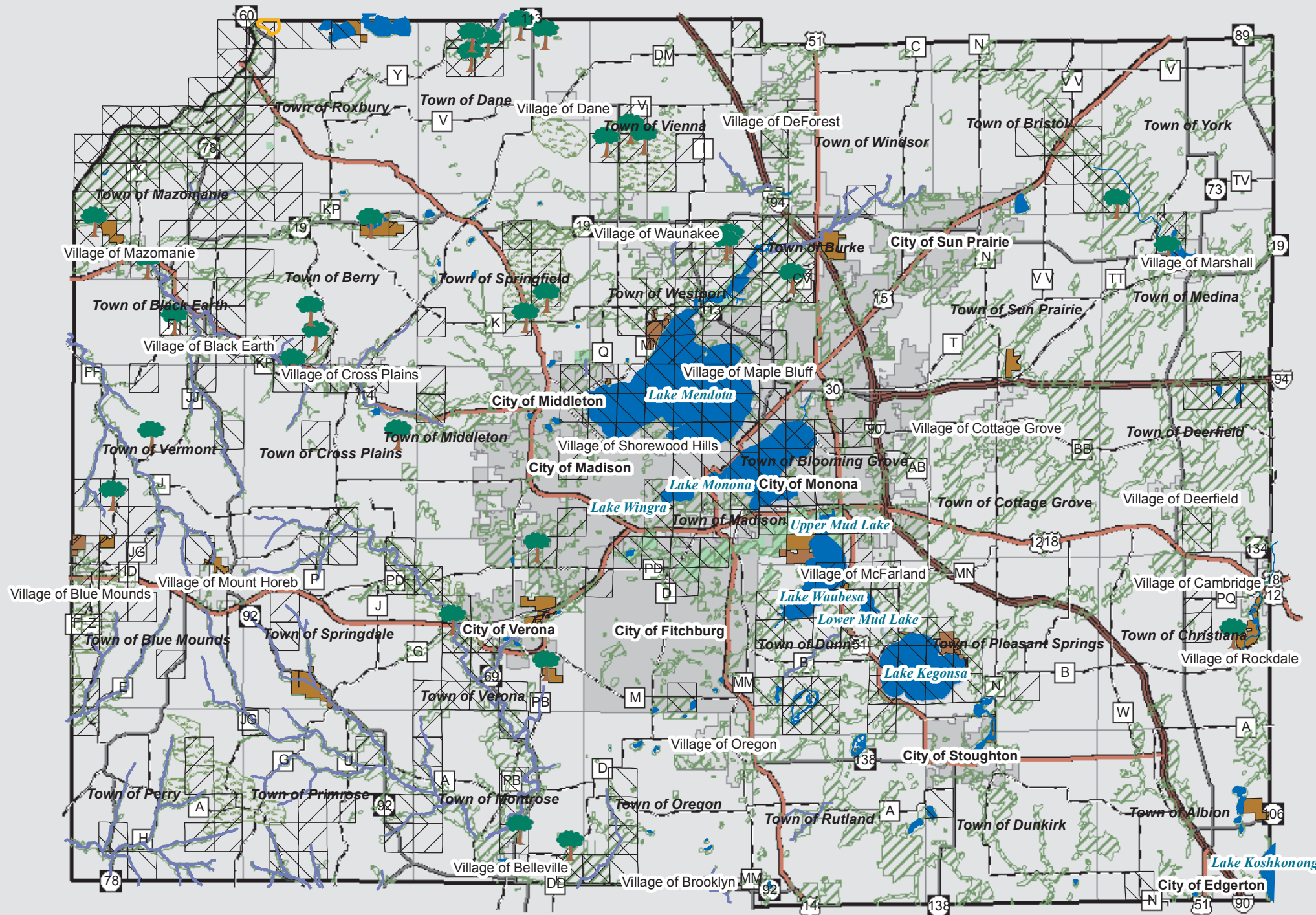
Dane County Comprehensive Plan  
Dept. of Planning & Development  
210 Martin Luther King Jr. Blvd.  
Room 116  
Madison, WI 53703  
[www.daneplan.org](http://www.daneplan.org)

### Select Wildlife Resources

- Eagle Roosting Area
- Oak Savannah
- Cold Water Community
- Terrestrial
- Aquatic
- Both
- Parks
- Grassland Management Areas
- All Forest
- Open Space

### Standard Legend

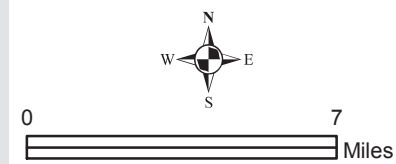
- Interstate
- US Highway
- State Highway
- County Highway
- City
- Village
- Town
- Major Lake



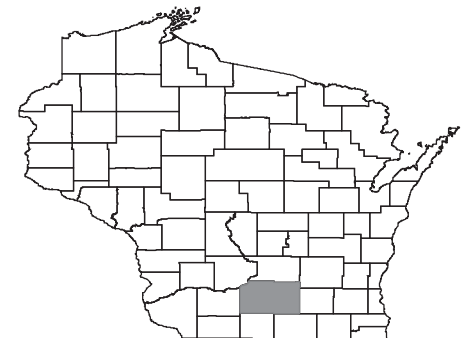
### What you're looking at:

Wildlife areas in Dane County are a diverse network of unique places. Dane County supports a wide array of wildlife including bald eagles in the northwest, oak savannahs, grassland management areas and numerous threatened or endangered species. Dane County must work with other agencies, land owners and communities to rebuild threatened species and reach a balance between man and animal.

For more information:  
<http://www.dnr.state.wi.us/>



June, 2007



Source Info: Threatened or Endangered Species: 2005 (WIDNR). Open Space: 2007 (CAPD). Road Network: 2006, Parcel Derived (DCLIO). Municipal Boundaries & Water: 2006, Parcel Derived (DCLIO).

This map was prepared through the Department of Planning and Development in conjunction with the Land and Water Resources Department, Land Information Office and the Dane County Regional Planning Commission.