

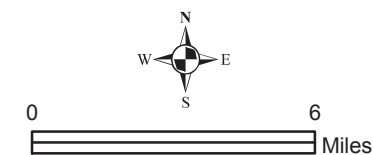
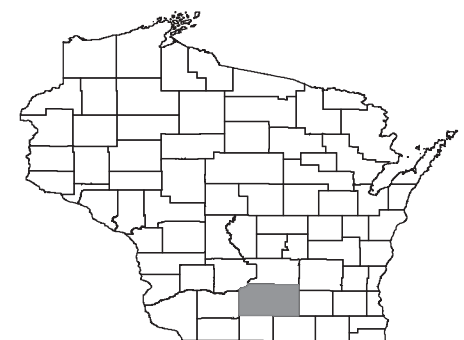
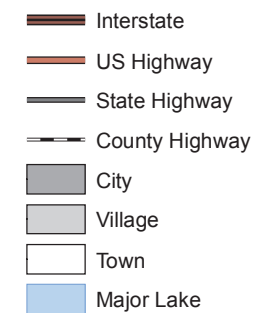


Dane County Comprehensive Plan
Dept. of Planning & Development
210 Martin Luther King Jr. Blvd.
Room 116
Madison, WI 53703
www.daneplan.org

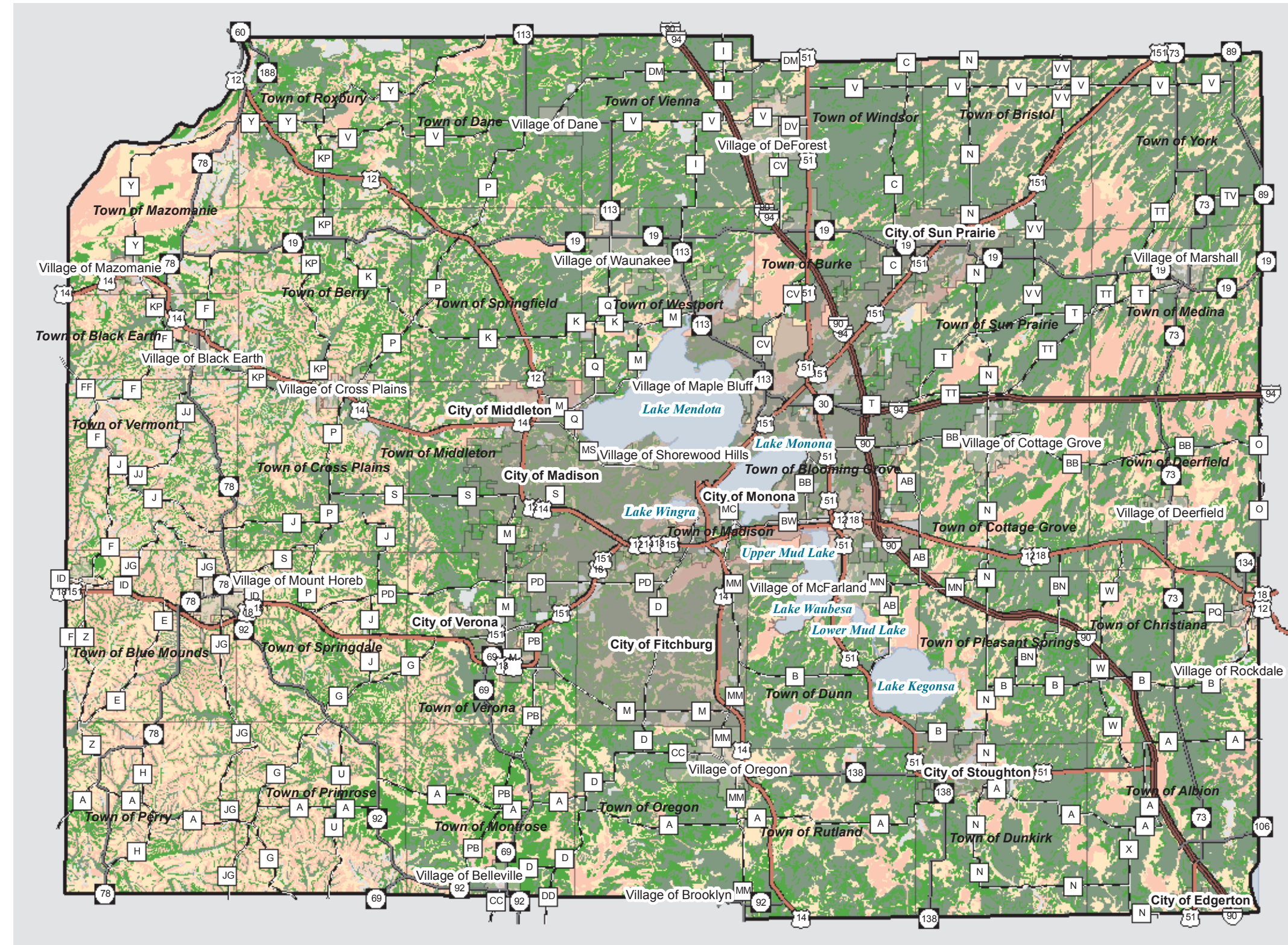
Ag Land Evaluation



Standard Legend



June, 2007



What you're looking at:

The factors used to determine Agricultural Land Evaluation were developed by the Natural Resources Conservation Service (NRCS) with cooperation from the Dane County Land and Water Resources Department. The ratings were based on information from Land Evaluation and Site Assessment. Three factors were used to determine a numeric LE rating:

1. prime farmland (10%)
2. soil productivity for corn (45%)
3. land capability class (45%)

For more information: <http://www.co.dane.wi.us/landconservation/lesapg.htm>

Source Info: Agricultural Groups: Digital Soils (LWRD, NRCS, LICGF). Municipal Boundaries & Water: 2006, Parcel Derived (DCLIO).

This map was prepared through the Department of Planning and Development in conjunction with the Land and Water Resources Department, Land Information Office and the Dane County Regional Planning Commission.